



* Image indicative only

Morton 24

Bungalow Facade

The Morton is an inviting four bedroom home with spacious open plan living, which is inspired by the Australian love of the great outdoors. The master bedroom is also situated at the rear of the home for privacy.

Inclusions:

- Design Guideline compliance
- Cosmopolitan Opal Specifications
- All fixed price site cost
- Alarm system
- Carpets
- Moroka to nominated areas of front facade
- Connection to Telstra Velocity Network
- Boundary fencing
- Landscaping - including garden beds to front (turving only to rear)
- Flyscreens to all sliding / awning windows
- Vertical blinds to all sliding aluminium windows & doors
- Auto garage doors openers
- Downlights to living/ family areas
- Oyster light fittings to remaining light points

Executive Villa Home

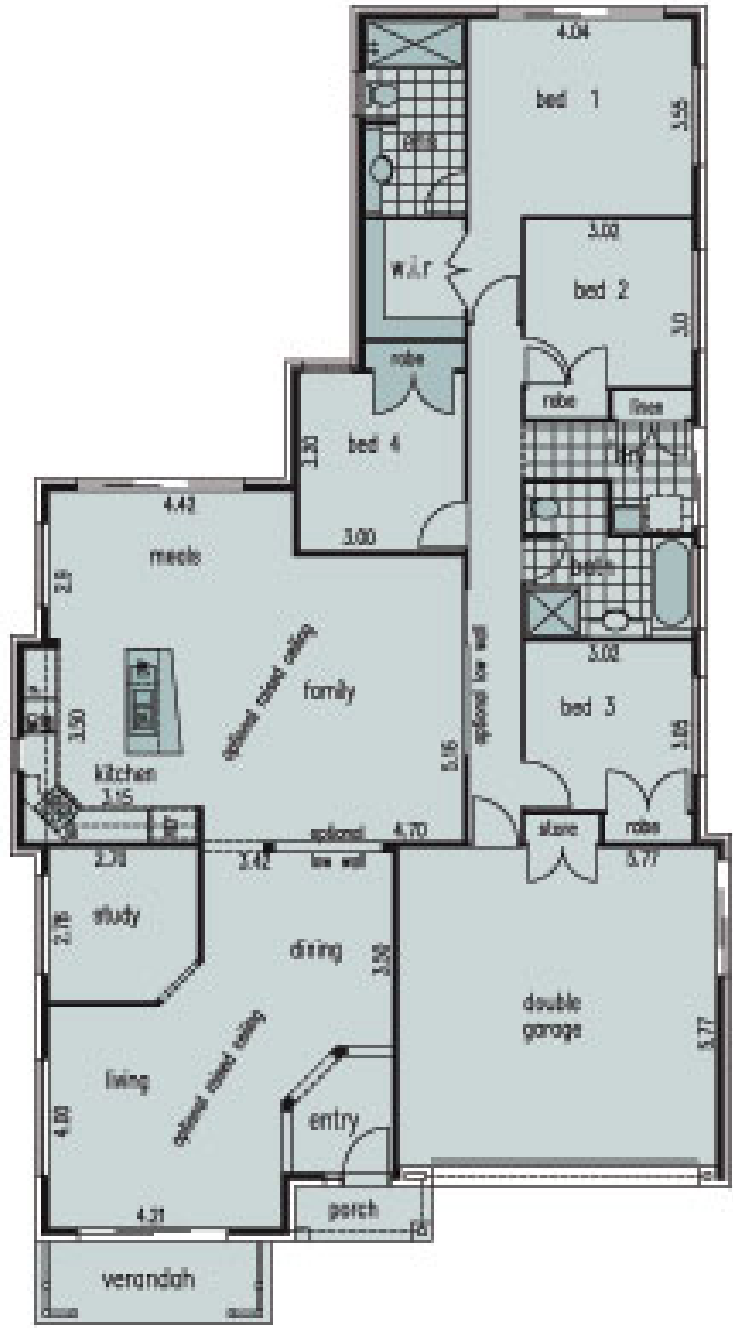
Lot 1223
Bolger Place

House and Land for

\$539,900* Land 600m² approx.
House 223m² approx.



- 4 bedrooms
- Double garage
- 2 bathrooms
- Living
- Study



Floor plan (not to scale)

Ground	183.34m ²
Garage	37.65m ²
Porch	2.46m ²
Total Area	223.45m²

Disclaimer: This brochure has been prepared by Medallist Golf Holdings Pty Ltd ATF Medallist Schofields Trust (Medallist) on behalf of Cosmopolitan Homes (the Builder) and the vendor. This sales brochure is a guide only, does not constitute an offer and is subject to the terms of any sale and/or construction contract. Whilst all information has been gathered from sources we deem to be reliable, we do not guarantee the accuracy of this information, nor do we accept responsibility for any action taken by intending purchasers in reliance on this information. Intending purchasers should make their own enquiries as to the details of the development and products available. The availability of certain products and materials may result in some deviation to this sales brochure. Whilst all details have been carefully prepared and are believed to be correct, no warranty can be given either expressly or implied by the vendors or their agents. Intending purchasers must rely on their own enquiries. The actual cost of the house and land package may vary depending on final inclusions chosen by purchaser. Illustrations are indicative only. Specifications may change at any time. Cosmopolitan Homes Builders Lic.No. 80391C. June 2009.